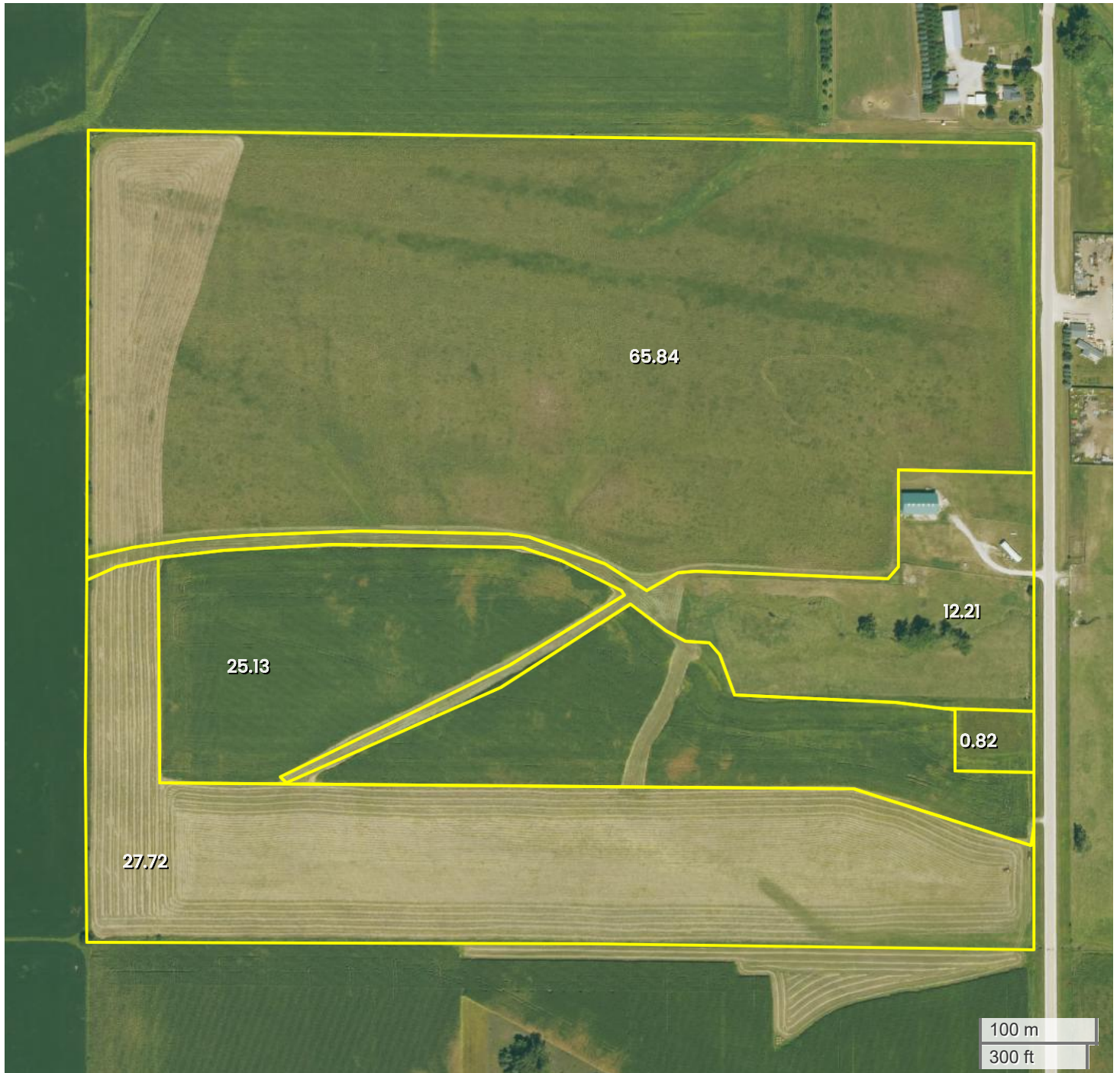




TRACT 1 (133.44 AC TOTAL, 119.51 AC TILLABLE)

AERIAL MAP



Center: 42.547945, -91.831055

06-89N-8W

Byron Township

Buchanan County, IA

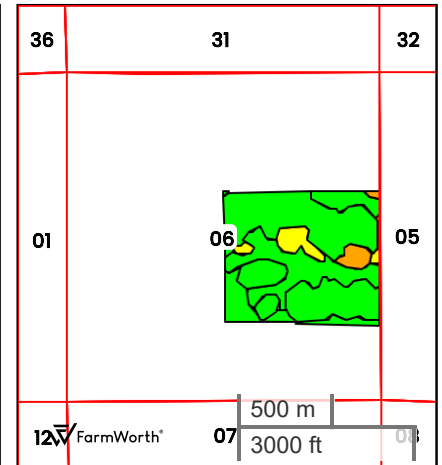
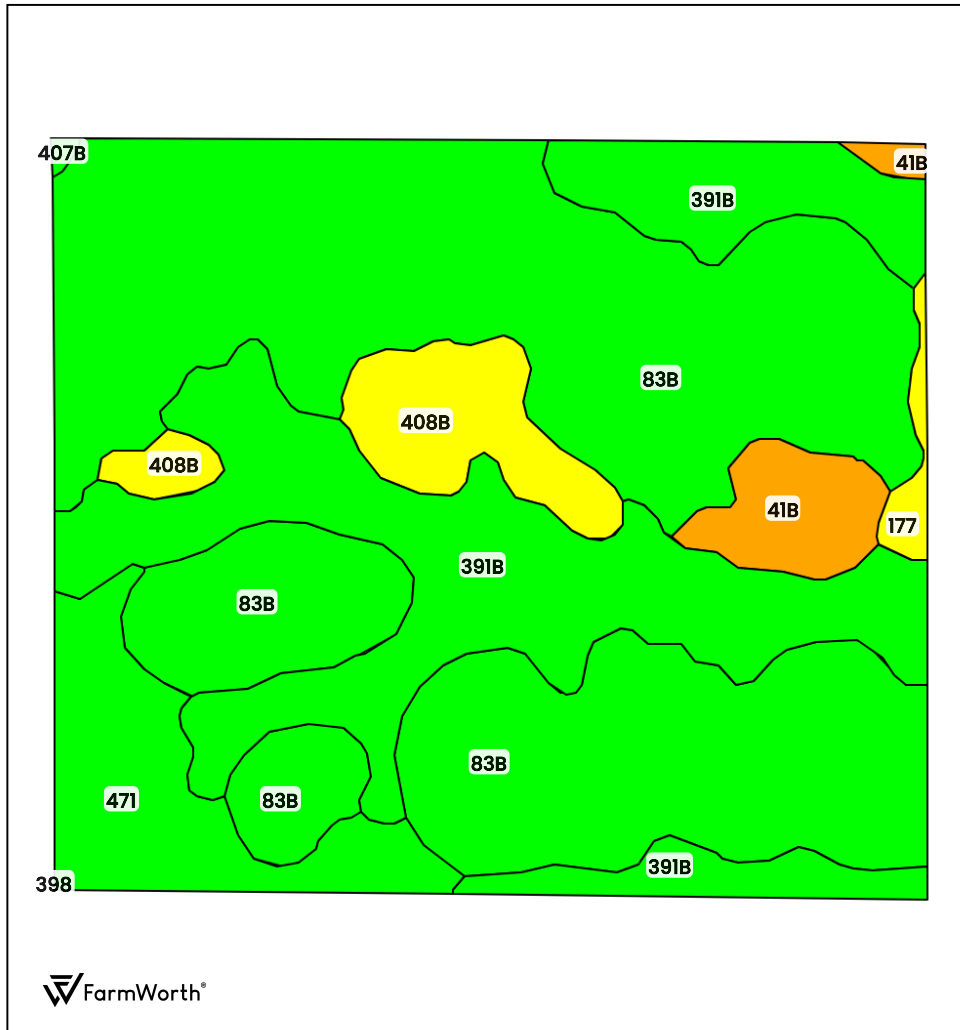


FarmWorth, LLC makes no representations or warranties, express or implied, as to the accuracy of any information, data, numerical values, boundaries, or any other information generated through the use of FarmWorth.com. User is solely responsible for independently investigating and determining all information provided through FarmWorth.com prior to use and waives any and all claims against FarmWorth, LLC for any inaccuracies or inconsistencies in the information and/or data.



TRACT 1 (133.44 AC TOTAL, 119.51 AC TILLABLE)

TOTAL SOILS



County: **Buchanan County, IA**
Location: **06-89N-8W**
Township: **Byron**
Acres: **131.94**
Date: **09/26/2025**



Field borders obtained from Farm Service Agency
as of 2008

FarmWorth, LLC makes no representations or warranties, express or implied, as to the accuracy of any information, data, numerical values, boundaries, or any other information generated through the use of FarmWorth.com. User is solely responsible for independently investigating and determining all information provided through FarmWorth.com prior to use and waives any and all claims against FarmWorth, LLC for any inaccuracies or inconsistencies in the information and/or data.

Code	Description	Acres	% of field	IA CSR2	Soil Class (Non-Irr)	Drainage Class
83B	Kenyon loam, 2 to 5 percent slopes	74.22	56.25 %	90	2	Moderately well drained
391B	Clyde-Floyd complex, 1 to 4 percent slopes	34.67	26.28 %	87	2	Poorly drained
471	Oran loam, 1 to 3 percent slopes	10.17	7.71 %	74	1	Somewhat poorly drained
408B	Olin sandy loam, 2 to 5 percent slopes	7.20	5.46 %	64	2	Well drained
41B	Sparta loamy sand, 2 to 5 percent slopes	4.42	3.35 %	42	4	Excessively drained
177	Saude loam, 0 to 2 percent slopes	1.11	0.84 %	60	2	Well drained
407B	Schley loam, 1 to 4 percent slopes	0.15	0.11 %	81	2	Somewhat poorly drained
398	Tripoli clay loam, 0 to 2 percent slopes	0.00	0.00 %	82	2	Poorly drained
Average:				84.7		

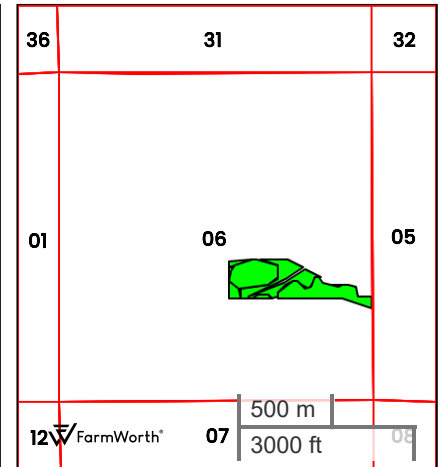
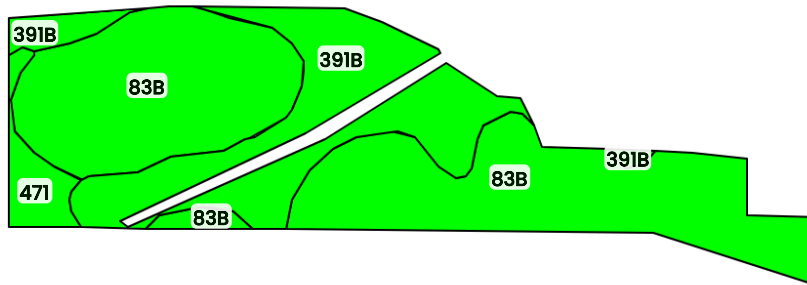
IA has updated the CSR values for each county to CSR2.

Soils data provided by USDA and NRCS.



TRACT 1 (133.44 AC TOTAL, 119.51 AC TILLABLE)

TILLABLE SOILS



County: **Buchanan County, IA**

Location: **06-89N-8W**

Township: **Byron**


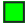
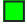
Acres: **25.13**

Date: **09/26/2025**



Field borders obtained from Farm Service Agency
as of 2008

FarmWorth, LLC makes no representations or warranties, express or implied, as to the accuracy of any information, data, numerical values, boundaries, or any other information generated through the use of FarmWorth.com. User is solely responsible for independently investigating and determining all information provided through FarmWorth.com prior to use and waives any and all claims against FarmWorth, LLC for any inaccuracies or inconsistencies in the information and/or data.

Code	Description	Acres	% of field	IA CSR2	Soil Class (Non-Irr)	Drainage Class
83B	 Kenyon loam, 2 to 5 percent slopes	16.30	64.86 %	90	2	Moderately well drained
391B	 Clyde-Floyd complex, 1 to 4 percent slopes	7.73	30.76 %	87	2	Poorly drained
471	 Oran loam, 1 to 3 percent slopes	1.10	4.38 %	74	1	Somewhat poorly drained
Average:				88.4		

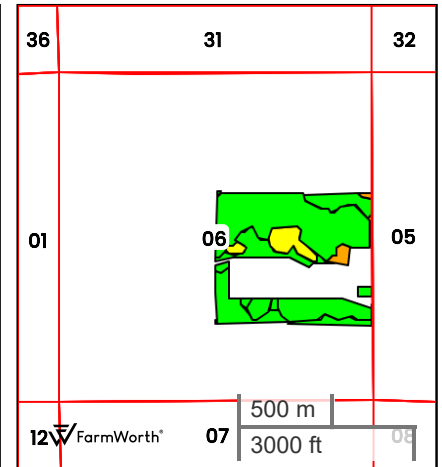
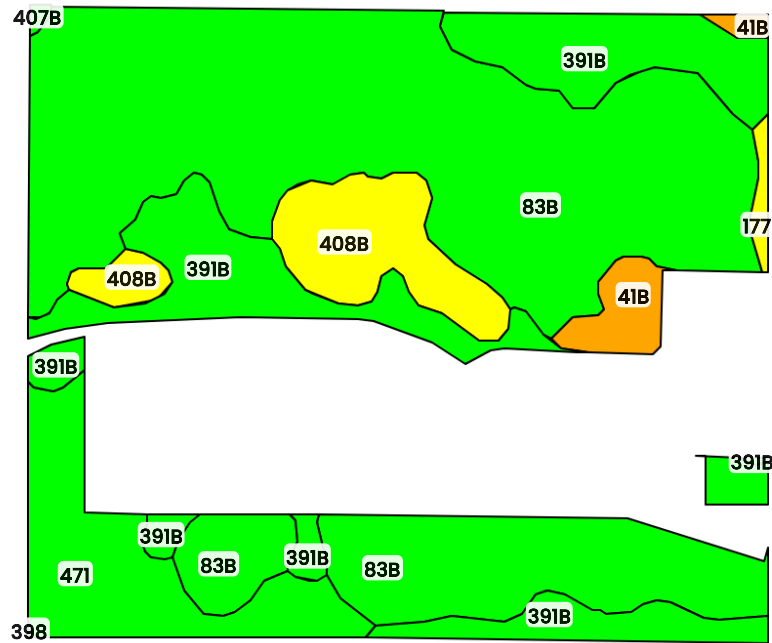
IA has updated the CSR values for each county to CSR2.

Soils data provided by USDA and NRCS.



TRACT 1 (133.44 AC TOTAL, 119.51 AC TILLABLE)

CRP SOILS



County: **Buchanan County, IA**

Location: **06-89N-8W**

Township: **Byron**

Acres: **94.38**

Date: **09/26/2025**



Field borders obtained from Farm Service Agency
as of 2008

FarmWorth, LLC makes no representations or warranties, express or implied, as to the accuracy of any information, data, numerical values, boundaries, or any other information generated through the use of FarmWorth.com. User is solely responsible for independently investigating and determining all information provided through FarmWorth.com prior to use and waives any and all claims against FarmWorth, LLC for any inaccuracies or inconsistencies in the information and/or data.

Code	Description	Acres	% of field	IA CSR2	Soil Class (Non-Irr)	Drainage Class
83B	Kenyon loam, 2 to 5 percent slopes	56.65	60.02 %	90	2	Moderately well drained
391B	Clyde-Floyd complex, 1 to 4 percent slopes	18.27	19.36 %	87	2	Poorly drained
471	Oran loam, 1 to 3 percent slopes	9.23	9.78 %	74	1	Somewhat poorly drained
408B	Olin sandy loam, 2 to 5 percent slopes	7.20	7.63 %	64	2	Well drained
41B	Sparta loamy sand, 2 to 5 percent slopes	2.34	2.48 %	42	4	Excessively drained
177	Saude loam, 0 to 2 percent slopes	0.55	0.58 %	60	2	Well drained
407B	Schley loam, 1 to 4 percent slopes	0.13	0.14 %	81	2	Somewhat poorly drained
398	Tripoli clay loam, 0 to 2 percent slopes	0.01	0.01 %	82	2	Poorly drained
Average:				84.5		

IA has updated the CSR values for each county to CSR2.

Soils data provided by USDA and NRCS.





TRACT 1 (133.44 AC TOTAL, 119.51 AC TILLABLE)

FLOOD HAZARDS



FarmWorth, LLC makes no representations or warranties, express or implied, as to the accuracy of any information, data, numerical values, boundaries, or any other information generated through the use of FarmWorth.com. User is solely responsible for independently investigating and determining all information provided through FarmWorth.com prior to use and waives any and all claims against FarmWorth, LLC for any inaccuracies or inconsistencies in the information and/or data.

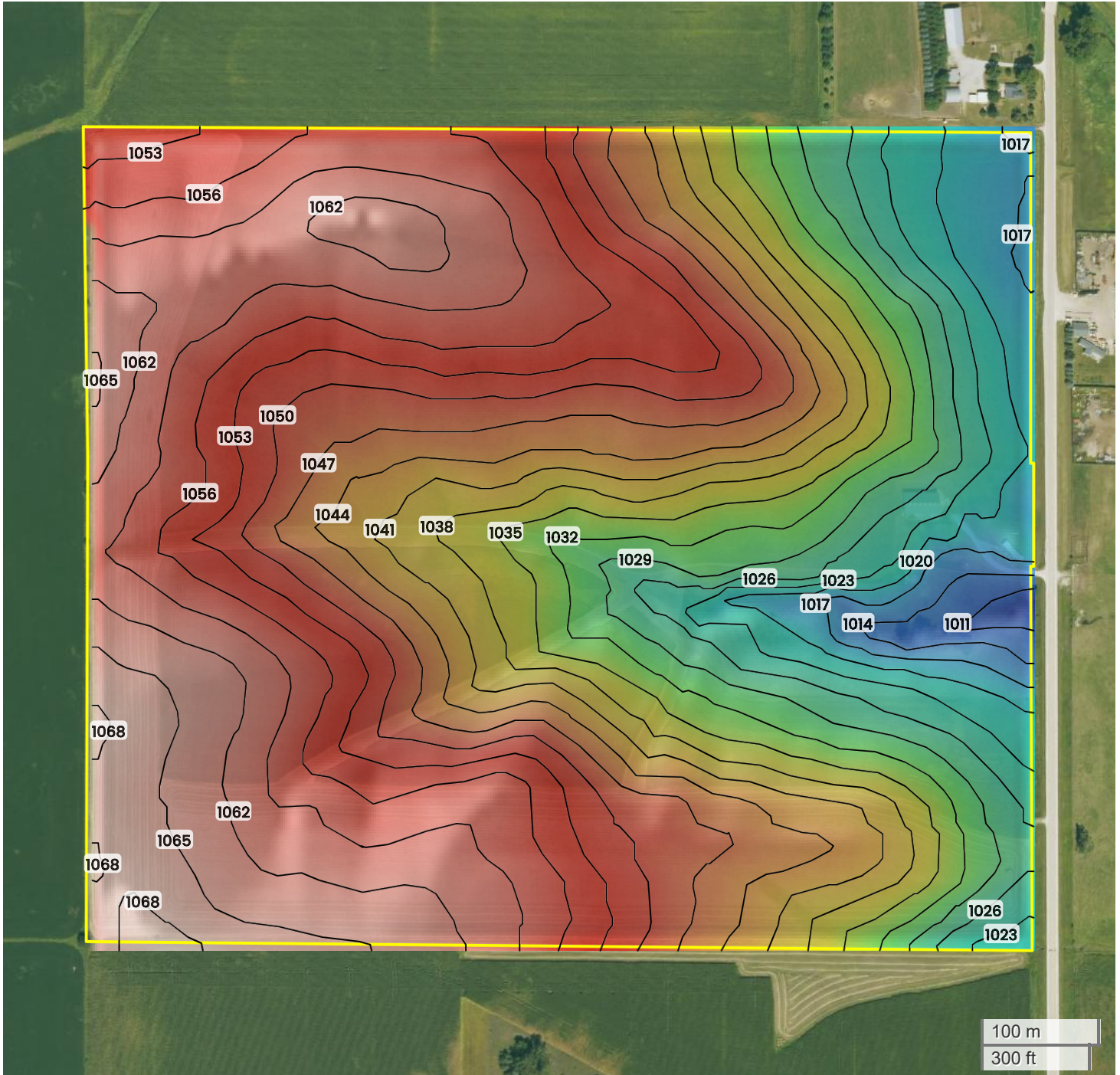
Significant Flood Hazards

-  Regulatory Floodway (Zones AE, AO, AH, VE, AR)
-  Without Base Flood Elevation (BFE), with BFE or Depth (Zones A, V, A99)



TRACT 1 (133.44 AC TOTAL, 119.51 AC TILLABLE)

TOPOGRAPHY



1011 ft

1068 ft



Center: 42.547948, -91.831072

06-89N-8W

Byron Township

Buchanan County, IA

Source: USGS 10m DEM

Interval(ft): 3

Max: 1068.0 ft

Min: 1011.0 ft

Range: 57.0 ft

Average: 1039.5 ft

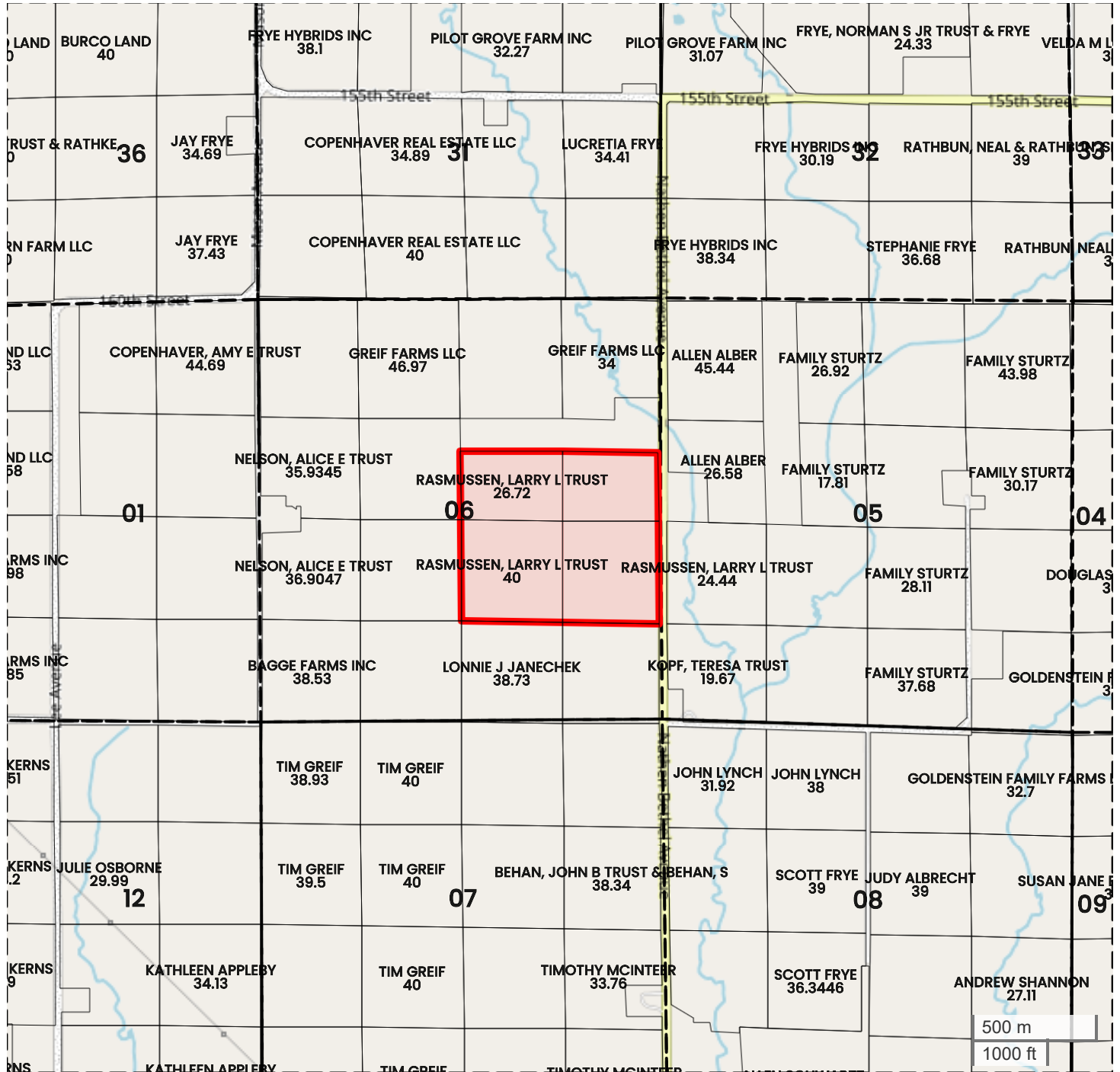


FarmWorth, LLC makes no representations or warranties, express or implied, as to the accuracy of any information, data, numerical values, boundaries, or any other information generated through the use of FarmWorth.com. User is solely responsible for independently investigating and determining all information provided through FarmWorth.com prior to use and waives any and all claims against FarmWorth, LLC for any inaccuracies or inconsistencies in the information and/or data.



TRACT 1 (133.44 AC TOTAL, 119.51 AC TILLABLE)

PLAT MAP



Center: 42.547926, -91.831075

06-89N-8W

Byron Township

Buchanan County, IA



FarmWorth, LLC makes no representations or warranties, express or implied, as to the accuracy of any information, data, numerical values, boundaries, or any other information generated through the use of FarmWorth.com. User is solely responsible for independently investigating and determining all information provided through FarmWorth.com prior to use and waives any and all claims against FarmWorth, LLC for any inaccuracies or inconsistencies in the information and/or data.



TRACT 1 (133.44 AC TOTAL, 119.51 AC TILLABLE)

PROXIMITY MAP



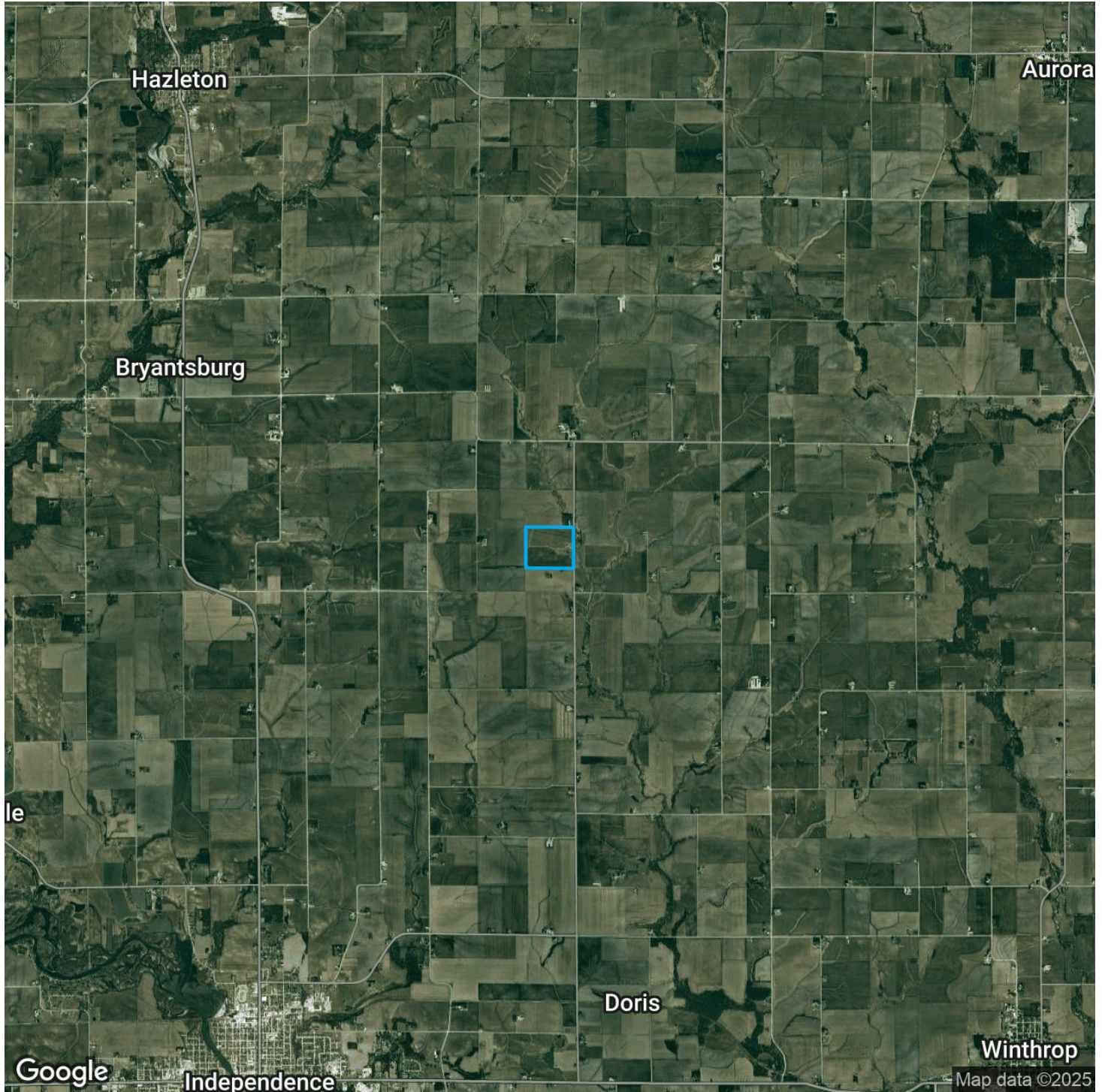
FarmWorth, LLC makes no representations or warranties, express or implied, as to the accuracy of any information, data, numerical values, boundaries, or any other information generated through the use of FarmWorth.com. User is solely responsible for independently investigating and determining all information provided through FarmWorth.com prior to use and waives any and all claims against FarmWorth, LLC for any inaccuracies or inconsistencies in the information and/or data.

 [Get Driving Directions](#)



TRACT 1 (133.44 AC TOTAL, 119.51 AC TILLABLE)

REGIONAL MAP



FarmWorth, LLC makes no representations or warranties, express or implied, as to the accuracy of any information, data, numerical values, boundaries, or any other information generated through the use of FarmWorth.com. User is solely responsible for independently investigating and determining all information provided through FarmWorth.com prior to use and waives any and all claims against FarmWorth, LLC for any inaccuracies or inconsistencies in the information and/or data.

 [Get Driving Directions](#)